

# Best practice - Pillr & Solibri BCF-server

## Why?

With this setup we provide you with the best practice in using Pillr and Solibri with the BCF-server.

## Setting up Pillr

**PROJECT NAME**  
Beste Practice BCF workflow

**PROJECT STATUS**  
In progress

**THE PROJECT IS ACCESSIBLE FOR:**

Public

Everyone with the link

Team members

**BCF SERVER**

Visible for team members

To use the BCF connector you have to select the option under the project settings.

Create a new project or edit your project setting and make your sure you have selected the BCF Server option visible for team members.

This option can be set or stopped anytime you want. Issues stored on Pillr will be visible when the synchronization is stopped.

To be able to get all the right information within Solibri please set up the next steps to have the best practice for the BCF workflow.

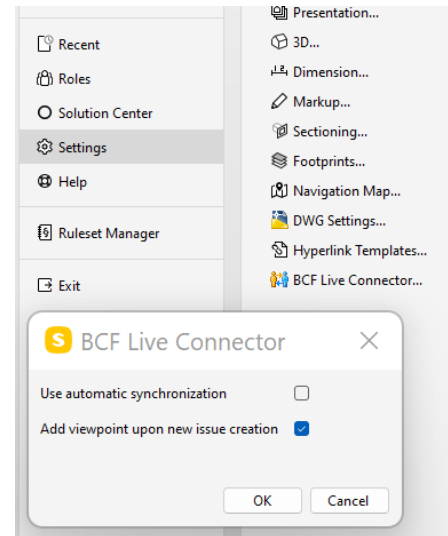
## Users

Please add all the users that are working on you project in the Pillr project settings.

## Labels

To be able to use labels within Solibri create within Pillr a dummy task. In this task add all the labels that you want use on the project. If you want to add a label later please update the task. The new labels will be updated in Solibri.

## Setting up Solibri



Within in Solibri go to your settings and select the BCF live connector settings.

Please make sure you uncheck the "Use automatic synchronization". This will add the "Mark As Ready" button in Solibri when you are creating issues.

If not selected Solibri will start synchronizing directly when adding a new issue.

## Ready

You are now ready and set to have best out of the BCF-workflow between Pillr and Solibri. Always select the filter option when starting the BCF Live Connector to get all the detail information.

## Contact

*Problems with setting up the connection between Pillr and Solibri?  
Please contact Pillr by sending an email to [support@pillr.nl](mailto:support@pillr.nl)*