

Connect - Pillr & Solibri BCF-server

The BCF Live Connector is a simplified way to setup a direct link to a Pillr project, where the attribute options and issue settings are controlled by the BCF server. The BCF server updates information in a bi-directional synchronization.

Important information

- The full functionality of the BCF Live Connector is available in Solibri Office and Site v9.12.0 and higher. Solibri Anywhere users can view, comment on, and edit BCF Live issues.
- Each BCF Live session is connected to one single project at a time. It is possible to end a session and connect to a different server of project in the same Solibri instance.
- The last used project is remembered (indicated in bold text), however, after turning the BCF Live connection on, it must be selected to begin synchronization.

Note:

Always select the filter option by starting the BCF Live Connector to make sure all the detail information will be shown.

1. Configure settings

Open the Pillr project settings, go to the General tab and mark the checkbox under BCF server.

2. Configure in Solibri

1. In the BCF live connector page, turn on the BCF Live view.
2. In the select project dialog, add the Pillr server by using the + button. Log in to validate.
3. In the Add/Edit server dialog, find and select Pillr in the server drop down. This will update the server name and URL fields. Solibri offers the user to name the server so that a custom label can be used when selecting the server.
4. After authentication and selecting a project, you can use the Filter button to filter issues prior to loading the project. Because the issues load in groups of 5 at a time, it can take a long time to load all issues of a large project. By allowing the user to filter prior to synchronizing the first time, this lets the users only load certain criteria of issues right for the start.
5. Click start synchronization. Your issues will be synchronized.

3. Contact

Problems with setting up the connection between Pillr and Solibri?

Please contact us via to support-nl@nti-group.com

Best practice - Pillr & Solibri BCF-server

With this setup we provide you with the best practice in using Pillr and Solibri with the BCF-server.

Setting up Pillr

The screenshot shows the Pillr project settings interface. It includes a 'PROJECT NAME' field with the text 'Beste Practice BCF workflow', a 'PROJECT STATUS' dropdown menu set to 'In progress', and a section titled 'THE PROJECT IS ACCESSIBLE FOR:' with three radio button options: 'Public', 'Everyone with the link', and 'Team members' (which is selected). Below this is a 'BCF SERVER' section with a checked checkbox for 'Visible for team members'.

To use the BCF connector you must select the option under the project settings.

Create a new project or edit your project setting and make your sure you have selected the BCF Server option visible for team members.

This option can be set or stopped anytime you want. Issues stored on Pillr will be visible when the synchronization is stopped.

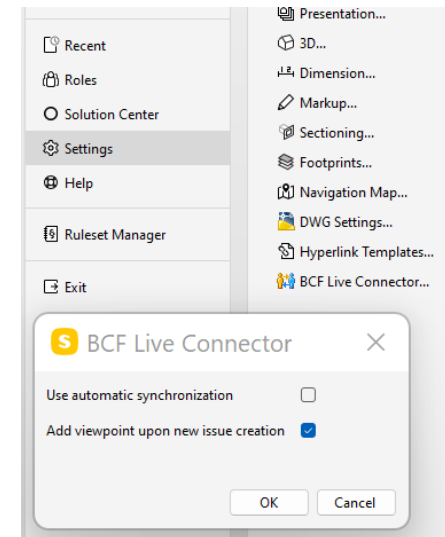
To be able to get all the right information within Solibri please set up the next steps to have the best practice for the BCF workflow.

Users

Please add all the users that are working on you project in the Pillr project settings.

Labels

To be able to use labels within Solibri create within Pillr a dummy task. In this task add all the labels that you want use on the project. If you want to add a label later, please update the task. The new labels will be updated in Solibri.



Setting up Solibri

Within in Solibri go to your settings and select the BCF live connector settings.

Please make sure you uncheck the "Use automatic synchronization". This will add the "Mark As Ready" button in Solibri when you are creating issues.

If not selected Solibri will start synchronizing directly when adding a new issue.

Ready

You are now ready and set to have best out of the BCF workflow between Pillr and Solibri. Always select the filter option when starting the BCF Live Connector to get all the detail information.

Contact

Problems with setting up the connection between Pillr and Solibri? Please contact us via support-nl@nti-group.com